

# Armor-Edge™ n2e Joint Assembly

## Joint Protection for New to Existing Floors

Armor-Edge™ n2e is a superior edge protection system for transitions from new to existing concrete slabs. Typically, it is used in expansions and repairs of freezer buildings, new door openings and other high-traffic areas to provide a smooth surface transition for forklift traffic.

### Engineering Advantages

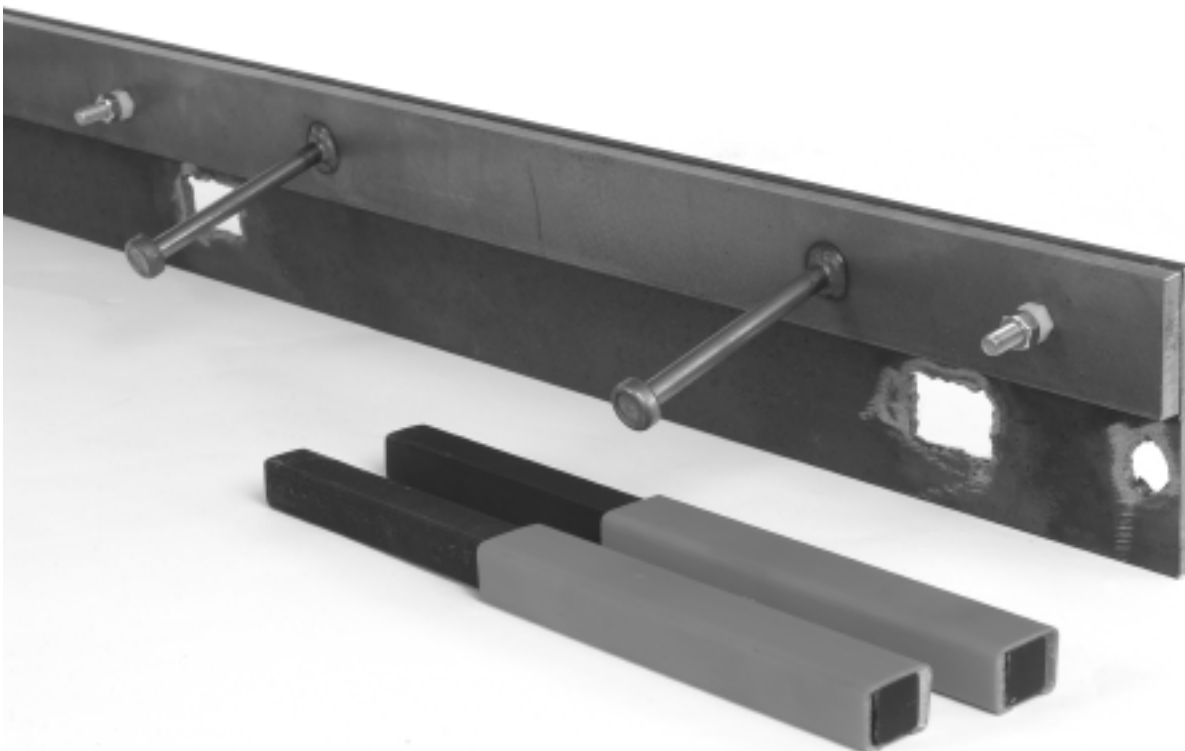
- Eliminates spalling for the life of the floor
- Bolts to an existing floor
- Improves surface tolerances and profile of the existing slab
- PNA Square Dowel Clips™ have foam sides to allow lateral movement and accommodate concrete shrinkage without causing restraint

### Cost Effective

- Arrives onsite fully assembled
- Eliminates onsite welding or grinding with skilled labor

### Ease of Installation

- Ships as a complete engineered system
- Provides very straight edges to finish against
- Eliminates form removal
- Cold-rolled steel provides a flat exposed surface edge to finish against



## Instructions for Use

The standard length is 10 feet.

### Step 1

Hold the steel plate against the existing slab, ensuring the steel plate and bar are flush with the existing slab surface. Mark the locations of the holes for the square dowels and anchor bolts with spray paint.

Remove the Armor-Edge™ n2e joint assembly.

### Step 2

Drill holes for the square dowels using a 1 1/4" drill bit and for the anchor bolts using a 1/2" drill bit. Firmly attach the Armor-Edge™ n2e to the existing slab with the anchor bolts provided. Check the assembly for the correct line and elevation and adjust if required.

### Step 3

Epoxy grout the 3/4" X 12" square dowels provided into the pre-drilled holes. Allow epoxy to cure. Install square dowel clips with side foam vertical to the faces of the bars.

### Step 4

Remove the steel shipping nut and washer.

### Step 5

Pour and finish the first slab using internal vibration to consolidate the concrete, per ACI specifications.

### Step 6

Remove concrete paste from the top of the plate and bar during finishing.

### Step 7

If the existing slab is uneven or out of level, then grind joint flush.

If this is not possible, saw-cut 1/2" deep, 18"-24" back; chip existing slab down 1/2"-3/4" and top with approved epoxy topping materials.

*Where significant slab movement is expected, steel plating of the joint edges is recommend; for strengthening the edges.*

—ACI 302.1R-04

#### LOAD TRANSFER SYSTEMS

- ▶ DIAMOND DOWEL® SYSTEM
- ▶ LOAD PLATE BASKET™ ASSEMBLY
- ▶ PD<sup>3</sup> BASKET™ ASSEMBLY
- ▶ ROUND/SQUARE DOWELS, CLIPS & BASKETS

#### JOINT PROTECTION PRODUCTS

- ▶ ARMOR-EDGE™ JOINT ASSEMBLY
- ▶ ARMOR-EDGE™ N2E JOINT ASSEMBLY

#### HYDRACURE™ COVERS



800.542.0214

[WWW.PNA-INC.COM](http://WWW.PNA-INC.COM)

© 2005 PNA Construction Technologies, Inc. All rights reserved. 01/05  
Armor-Edge® is a registered trademark of PNA Construction Technologies, Inc. US Patent #6,775,952. Other foreign patents pending.